



TB-37-93-1622 Latch Assembly

Precedent® Roadside Door

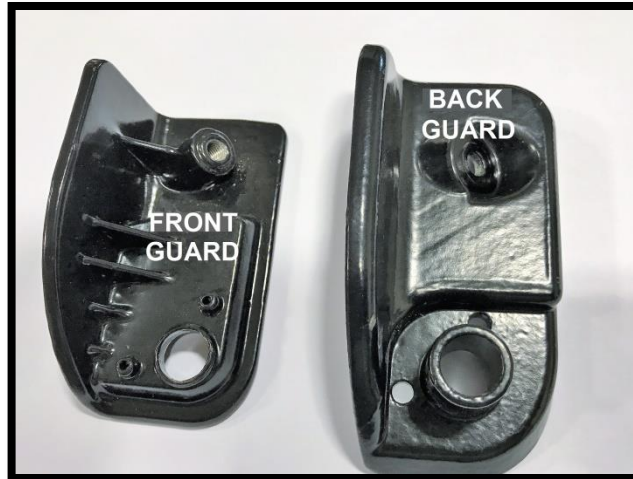
Assembly Instructions

Hardware Included with this kit:

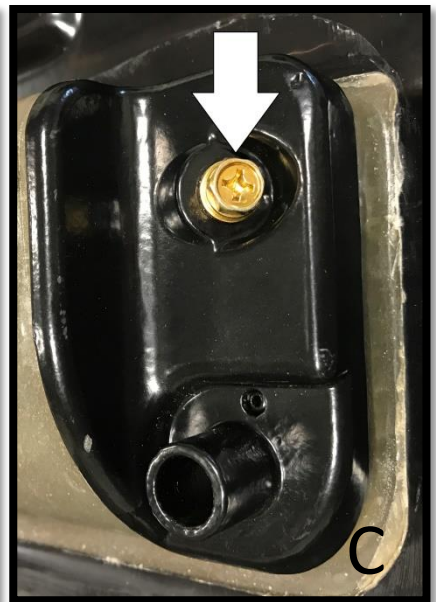
- TB-37-55-4666 Screw M6 x 1/4" (6PCS)
- TB-1622-GUARD Handle Guard Set (1 set = front/back)
- TB-1622-LINKAGE Linkage Rod Set (1 set)
- TB-1622-WASH Plastic Washer (1PC)
- TB-37-51-2900 Grommet for Handle (1pc)
- TB-37-93-949 Handle Door Roadside (1pc)



Step 1 – Install Handle Guards (TB-1622-GUARD)



Place Front Guard on Door as shown below. While holding Front Guard in Place with your hand (A), Install the Back Guard (B) with 1 of the supplied M6 Screws (C) TB-37-55-4666.



Step 2 – Install the Grommet (TB-37-51-2900) into hole pictured below for the Door Handle.



Step 3 – Install Door Handle (TB-37-93-949), The Plastic Washer (TB-1622-WASH) and Linkage Assembly (TB-1622-LINKAGE).

- Place door handle inside the handle guard and press into the grommet.



- Flip the door over to install plastic washer (A), align flat edges with linkage assembly plate (B) insert M6 screw (TB-37-55-4666) and tighten (C).

