



## **TB-9120-HW-KIT Hardware Kit for TB-37-98-9120**

### **Precedent Roadside Door Hardware Installation Instructions**

Hardware Included with this kit:

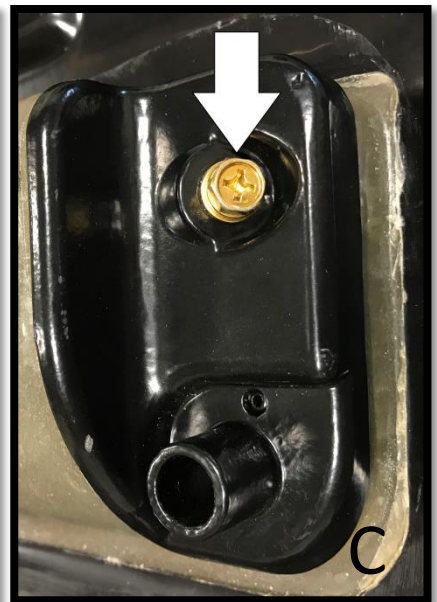
- TB-37-55-4666 Screw M6 x 1/4" (6PCS)
- TB-37-51-2759 Screw M6 x 5/8" (8PCS)
- TB-37-93-295 Hinge Door (2PCS)
- TB-37-93-294 Pin Hinge (2PCS)
- TB-1622-GUARD Handle Guard Set (1 set = front/back)
- TB-1622-LINKAGE Linkage Rod Set (1 set)
- TB-1622-WASH Plastic Washer (1PC)
- TB-37-51-2900 Grommet for Handle (1pc)
- TB-37-93-295 Door Handle RS (1pc)
- TB-37-93-303 Bracket for Linkage Rods (2 sets)
- TB-303B Bushing Plastic Split (2pcs)
- TB-37-93-1080 Hinge Frame (2pcs)
- TB-37-55-4414 Flat Washer for Frame Hinge (4pcs)



## Step 1 – Install Handle Guards (TB-1622-GUARD)



Place Front Guard on Door as shown below. While holding Front Guard in Place with your hand (A), Install the Back Guard (B) with 1 of the supplied M6 Screws (C) TB-37-55-4666.



Step 2 – Install the Grommet (TB-37-51-2900) into hole pictured below for the Door Handle.

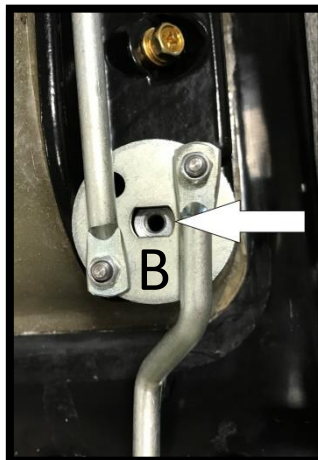
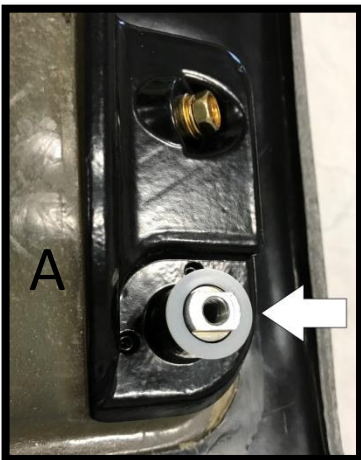


Step 3 – Install Door Handle (TB-37-93-949), The Plastic Washer (TB-1622-WASH) and Linkage Assembly (TB-1622-LINKAGE).

- Place door handle inside the handle guard and press into the grommet.



- Flip the door over to install plastic washer (A), align flat edges with linkage assembly plate (B) insert M6 screw (TB-37-55-4666) and tighten (C).



## Step 4 – Install Bracket Set (2) for Linkage Rods (TB-37-93-303)



INSTALL THE UPPER AND LOWER BRACKETS THIS DIRECTION  
(TOWARD THE DOOR'S EDGE)

**The bracket set contains a Top and Bottom bracket. The Top bracket is stamped with the letter “T”. The Bracket set is also directional and must be installed in the correct direction shown in the above photos. If the bracket set is installed the wrong direction the linkage rods will bind.**

4A - Place the linkage rod on top of bottom bracket. Place the “T” top bracket on bottom bracket and slide it over top of the linkage rod.





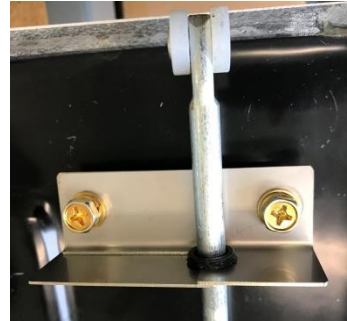
4B - Install the 2 M6 screws (TB-37-55-4666) and leave the screws loose.



4C - Put the Split Plastic Bushing (TB-303B) onto the linkage rod.



4D - With the bracket loose press the Plastic Bushing in the Bracket.



4E - While squeezing the bracket tight around bushing tighten the 2 bracket screws. Repeat this process for the second bracket.



Step 5 – Install the 2 Door Hinges (TB-37-93-295) with the 4 M6 Screws (TB-37-51-2759).



Step 6 – Install the 2 Frame Hinges (TB-37-93-1080) using the 4 M6 Screws (TB-37-51-2759) along with the 4 Flat Washers (TB-37-55-4414).

