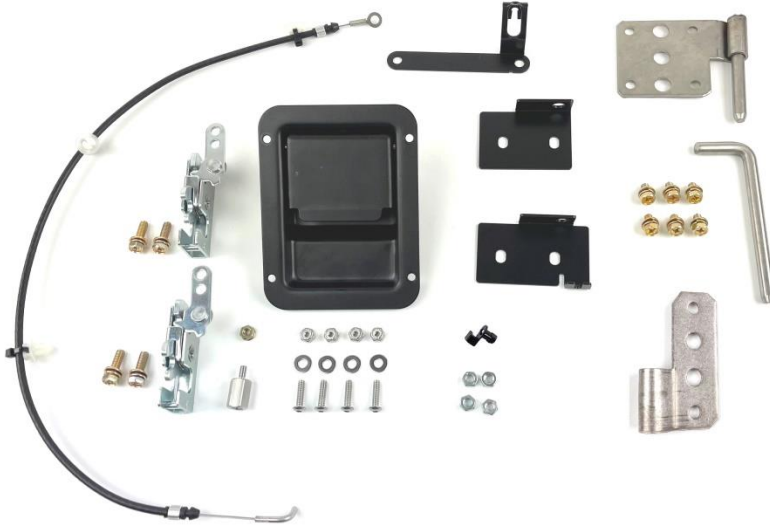




TB-9642-HW-KIT

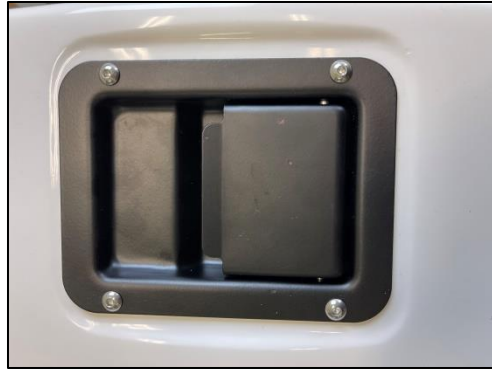
Hardware Kit Instructions



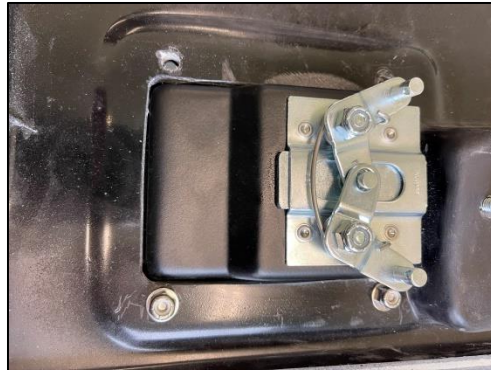
Items Included with this kit:

- TB-37-93-5007A Latch Upper/Lower RS (2pcs)
- TB-37-93-5007B Bracket Upper Latch RS (1pc)
- TB-37-93-5011 Cable Latch (1pc)
- TB-37-93-5008B Bracket Lower RS (1pc)
- TB-37-93-5008S Adapter Standoff (1pc)
- TB-37-93-5008N Nut for Standoff (1pc)
- TB-37-93-5013 Bracket Cable RS (1pc)
- TB-37-93-5009A Door Handle RS/CS (1pc)
- TB-37-93-5009S Screw Button Head (4pcs)
- TB-37-93-5009W Washer #10 Stainless (4pcs)
- TB-37-93-5009N Nut Nylon #10 (4pcs)
- TB-37-93-5349 Cotter Pin (1pc)
- TB-37-93-5012 Clip Cable (1pc)
- TB-37-55-7007 Nut Nylon Lock 6mm (4pcs)
- TB-37-51-2759 Screw 6mm 20mm (4pcs)
- TB-37-93-5003 Hinge Frame (2pcs)
- TB-37-93-5001 Hinge Upper (1pc)
- TB-37-93-5006 Hinge Lower (1pc)
- TB-37-93-5002 Pin Hinge (1pc)
- TB-37-55-4666 Screw 6mm x 12mm (6pcs)

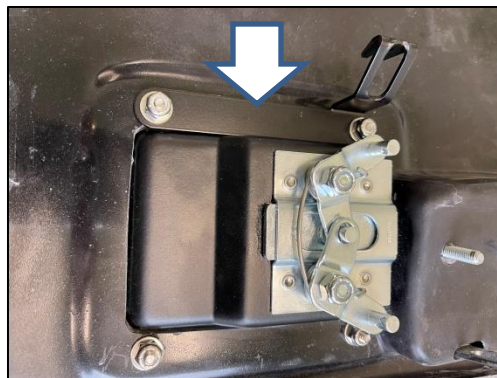
1 – Insert Door Handle (TB-37-93-5009A) into Door. Install the 4 button head screws (TB-37-93-5009S) along with washers (TB-37-93-5009W) and lock nuts (TB-37-93-5009N).



A) Install the 2 bottom head screws first (leave screws loose). The upper 2 button head screws will be installed with the cable bracket (TB-37-93-5013).



B) Install the cable bracket (TB-37-93-5013) along the upper 2 button head screws for door handle.



C) Tighten all 4 button head screws. Please note, a Allen head wrench will be needed to hold button head screws as you tighten nylon lock nuts.



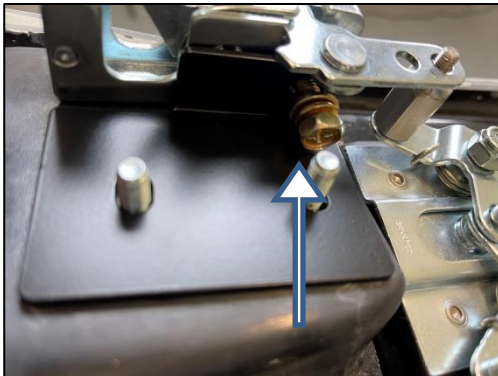
2 – Place Adapter Standoff (TB-37-93-5008S) onto lower latch peg.



3 – Set Lower latch (TB-37-93-5007A) onto Adapter Standoff (as shown in photo below). Align Lower Latch with Door Bracket as shown.



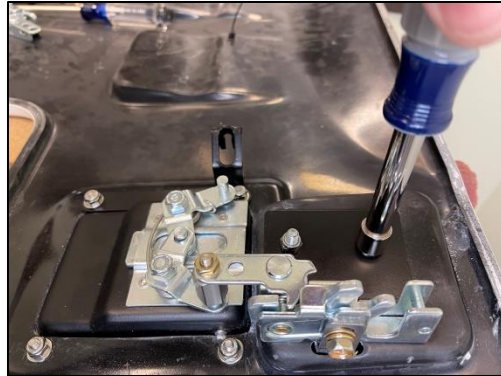
4 – Install 2 machine screws (TB-37-51-2759) into the Lower Latch (as shown in photos below) and tighten the screws with a Philips head screw driver.



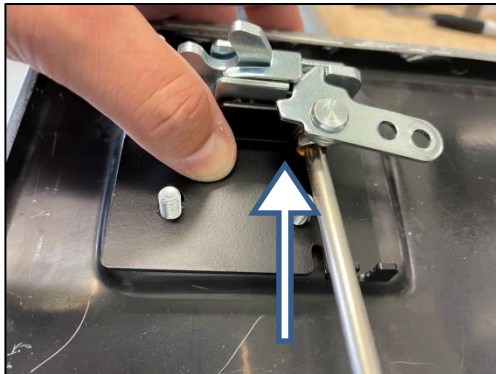
5 – Install the Adapter Nut (TB-37-93-5008N) Using a ½" Wrench and Nut Driver tighten the Adapter Nut (as shown below).



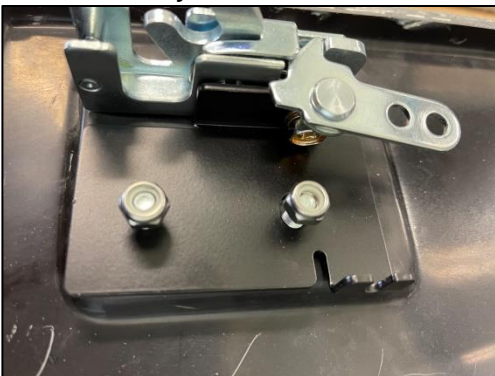
6 – Install 2 Nylon lock nuts (TB-37-55-7007) to lower latch bracket (as shown below) and tighten.



7 – Install 2 machine screws (TB-37-51-2759) into the Upper Latch Bracket (TB-37- 93-5007B) as shown below and tighten screws with a Phillips head screw driver.

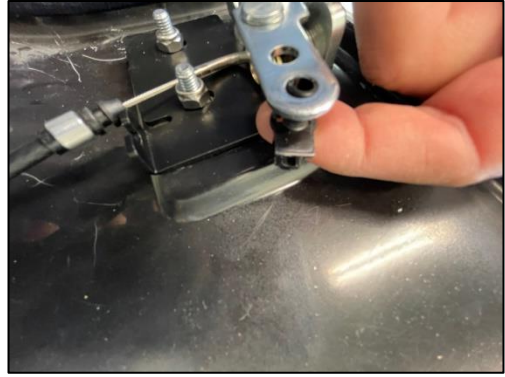


8 – Install 2 Nylon lock nuts (TB-37-55-7007) to Upper latch bracket (as shown below) and tighten.



9 – Install the Cable (TB-37-93-5011) for Latch.

- A) Insert the Clip Retainer (TB-37-93-5012) into the Upper Latch Assembly
(as shown in the photo below) Push clip into hole until it snaps into latch assembly.



- B) Insert the "L" shaped end of Cable into the Clip Retainer (as shown below) and rotate Clip Retainer until it snaps onto the Cable's "L" shaped end (this will be a tight fit so using pair of needle nose pliers will help the clip snap onto the cable).

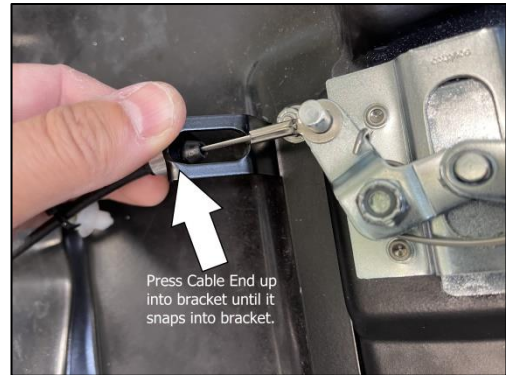


- C) Press the plastic Cable end into the Upper Latch Bracket until it snaps into bracket
(see photos below)

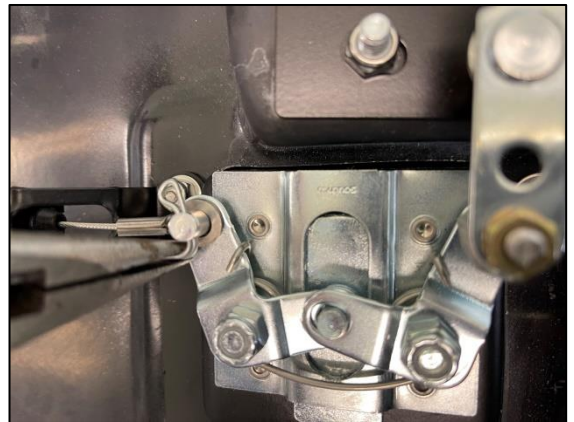
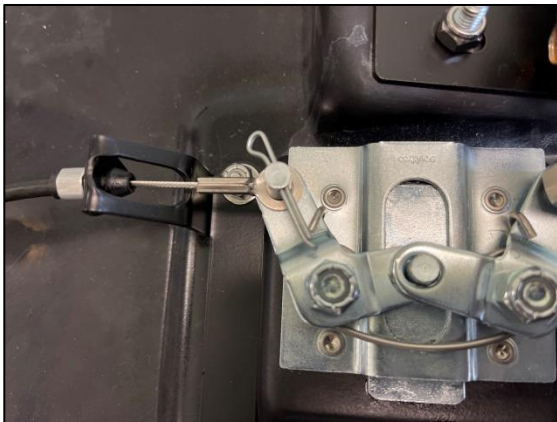


9 – Install the Cable Latch (continued..)

- D) Insert the Ring Side of Cable into the lower Cable bracket (TB-37-93-5013) and place the cable ring end onto the door latch (as shown in photo below). Press the cable upwards into bracket until it snaps into cable bracket.



- E) Insert the Cotter Pin (TB-37-93-5349) into the Latch Assembly (as shown in photo below). Using a pair of pliers bend the cotter pin to hold Cable on the latch (see photo below).



- F) Secure the Cable Assembly with the 2 Zip Ties located on the door (see photos below).

